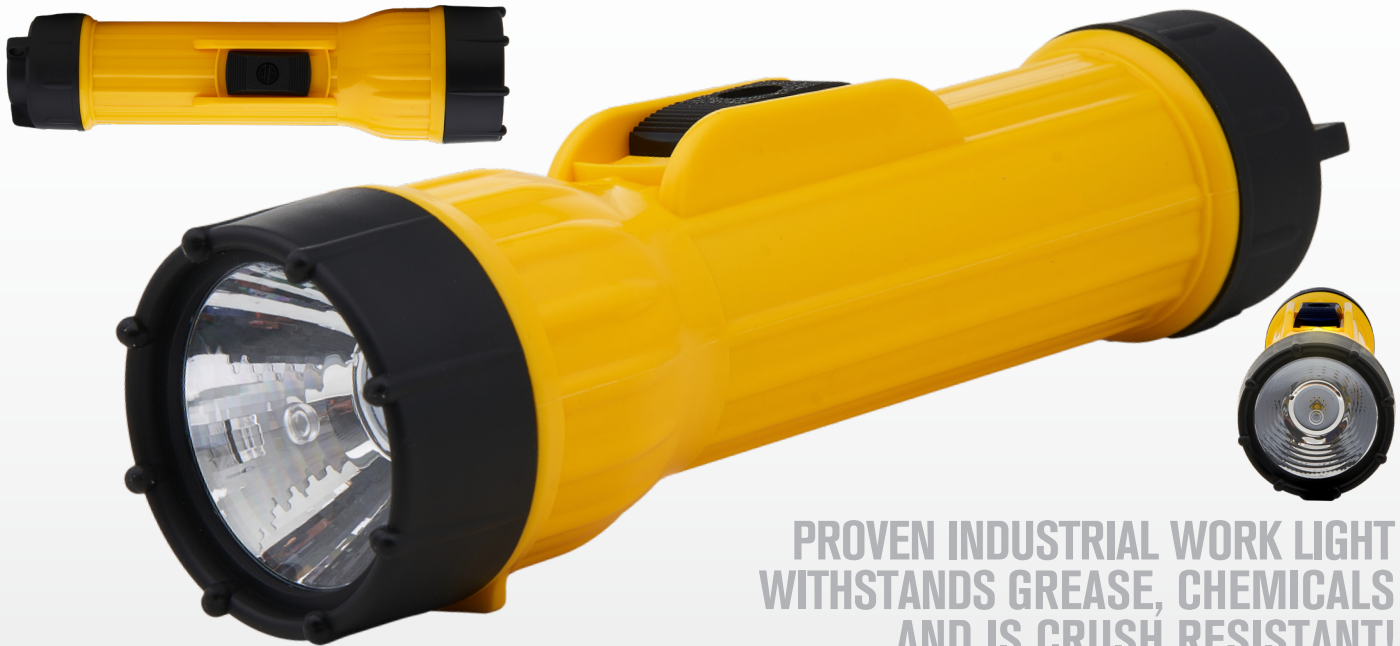
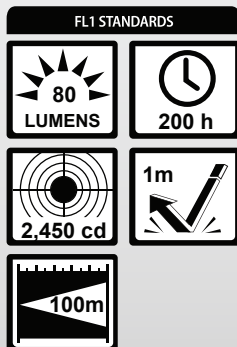


### HEAVY DUTY FLASHLIGHT RUNS 200 HOURS!

- Chemical and grease resistant
- Distortion free, vacuum metalized reflector
- 250,000 Cycle switch
- "Switch Guard" prevents accidental lighting
- Deep ribbed case for non-slip grip
- Anti-Roll Tube
- Crush-resistant case
- Unbreakable Lens



PROVEN INDUSTRIAL WORK LIGHT  
WITHSTANDS GREASE, CHEMICALS  
AND IS CRUSH RESISTANT!



#### SPECIFICATIONS

POWER SOURCE: 2D-cell Alkaline Batteries

LAMP: LED Technology

LIGHT OUTPUT: 80 Lumens

CANDELAS: 2,450

BEAM DISTANCE: 100 Meters

RUNTIME: 200 Hours

WEIGHT: 6.6 oz.

LENGTH: 8 in. WIDTH: 2.3 in.

COLORS: Yellow



LIGHTING INNOVATIONS SINCE 1909

