

DREW™ MICROBIOLOGICAL DUAL ASSAY SLIDES



DESCRIPTION

DREW Microbiological Dual Assay Slides are designed to provide a quick, semi-quantitative measurement of bacterial and fungal levels in a water sample. Each unit consists of a two-sided, agar containing slide housed in a clear plastic vial. The clear gold side of the paddle gives a non-selective total count of bacteria and the pink/red side tests for microorganism contamination (yeast and mold). The slide is attached to the vial cap to serve as a convenient handle and sterile receptacle for incubation.

APPLICATION & USE

This test is applicable for any aqueous sample thought to be biologically contaminated. It is not specific for individual strains of bacteria or fungus.

INSTRUCTIONS FOR USE

1. Unscrew the cap and remove the paddle from the vial. Do not touch the media.
2. Dip the paddle into the sample water making sure the surface of each slide is completely wet.
3. Remove the paddle from the liquid and allow excess liquid to drip off. Do not shake. Return the paddle to the vial and screw on the cap. NEVER add fluid to the plastic vial prior to incubation. This will result in unsatisfactory counts.
4. Label the plastic vial and record the necessary information.
5. Incubate the paddle tester in an upright position between 25° C and 30° C. Examine the bacterial slide at 24-48 hours for red colony growth. Examine the yeast/mold side at 48-120 hours (5 days) for pink colonies (yeast) and filamentous, fuzzy growth (mold).
6. Compare the density of the colonies to those depicted in the comparison chart to obtain the bacterial count and fungal count of the water sample.
7. Sterilize paddle testers before disposal by pouring 10-ml of sodium hypochlorite into the vial and allow to sit for a minimum of 30 minutes.



DREW Microbiological Dual Assay Slides
PCN 6923016
10 Slides per box

Notes

1. Accuracy is dependent on obtaining a representative sample of the water system being evaluated.
2. The assay slides will be deactivated if stored in either extreme heat or cold. Recommended storage temperature is 5-25° C. Consistency in maintaining one temperature is important to eliminate condensation and to preserve freshness.

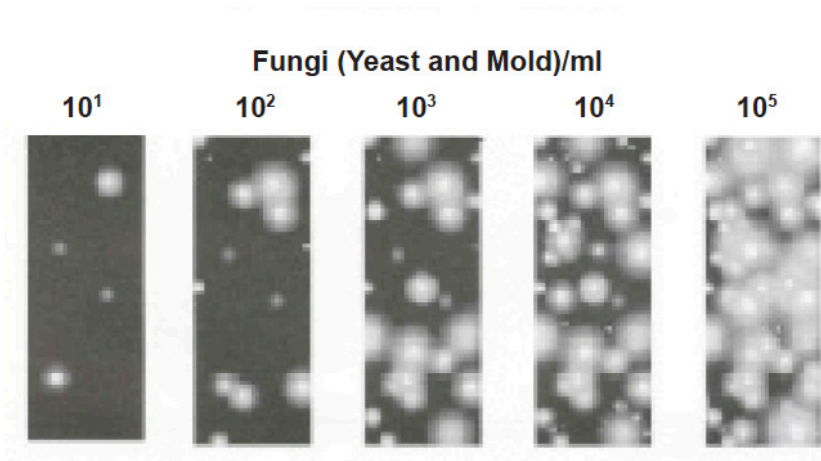
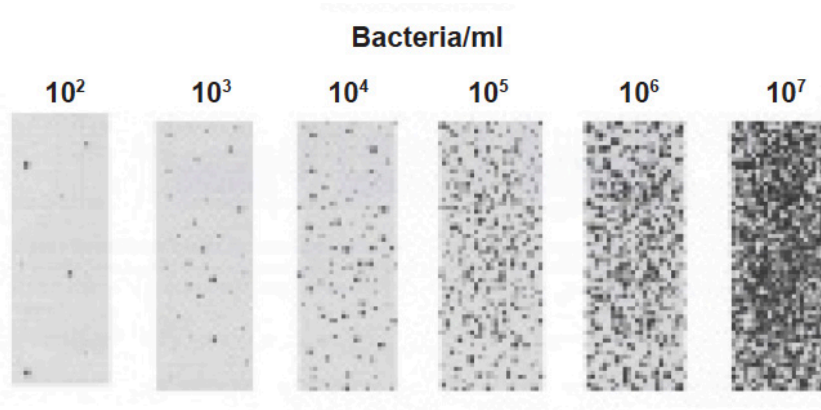
ORDERING INFORMATION

DREW™ Microbiological Dual Assay Slides (10/pack)
PCN 6923016



Contact your Drew Marine representative for more information

COMPARISON CHART



Contact your Drew Marine representative for more information

Drew Marine maintains Safety Data Sheets on all of its products. These documents contain health and safety information for the development of appropriate product handling procedures to protect your employees. Safety Data Sheets should be read and understood by all of your supervisory personnel and employees before using Drew Marine products.



Drew Marine®

**100 South Jefferson Road
Whippany, NJ 07981 USA
1-973-526-5700
Drew-Marine.com**

Copyright © Drew Marine. All Rights Reserved. All statements, information and data presented herein are believed to be accurate and reliable but are not to be taken as a guarantee, express warranty or implied warranty of merchantability or fitness for a particular purpose, or representation, express or implied, for which seller assumes legal responsibility, and they are offered solely for your consideration, investigation and verification. Statements or suggestions concerning possible use of this product are made without representation or warranty that any such use is free of patent infringement and are not recommendations to infringe on any patent.